

State of Wyoming Corner Record

(In compliance with the CORNER PERPETUATION AND FILING ACT, Wyoming Statutes, 1977, Section 36-11-101, et. seq., and the Rules and Regulations of the Board of Registration for Professional Engineers and Professional Land Surveyors)

Reverse side of this form may be used if more space is needed.

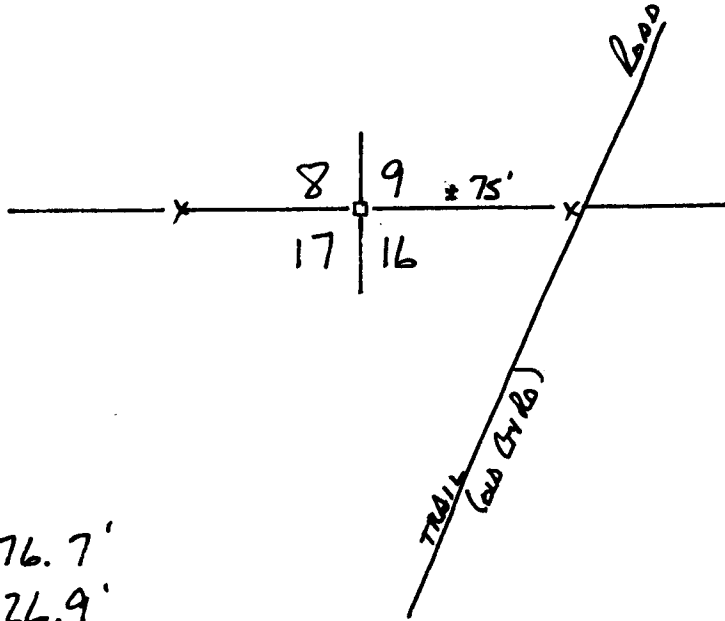
Record of original survey and citation of source of historical information (if corner is lost or obliterated). Description of corner monumentation evidence found and/or monument and accessories established to perpetuate the location of this corner. Sketch of relative location of monument, accessories, and reference points with course and distance to adjacent corner(s) (if determined in this survey). Method and rationale for reestablishment of lost or obliterated corner.

Recovered Rebar on E-W line.

210710

LARAMIE COUNTY CLERK
CHEYENNE, WY.

'97 SEP 24 PM 1 55



N. 378276.7'
E. 728426.9'

BASED ON NAD83 ADJ93
WYOMING EAST ZONE SAC
LARAMIE COUNTY WYOMING

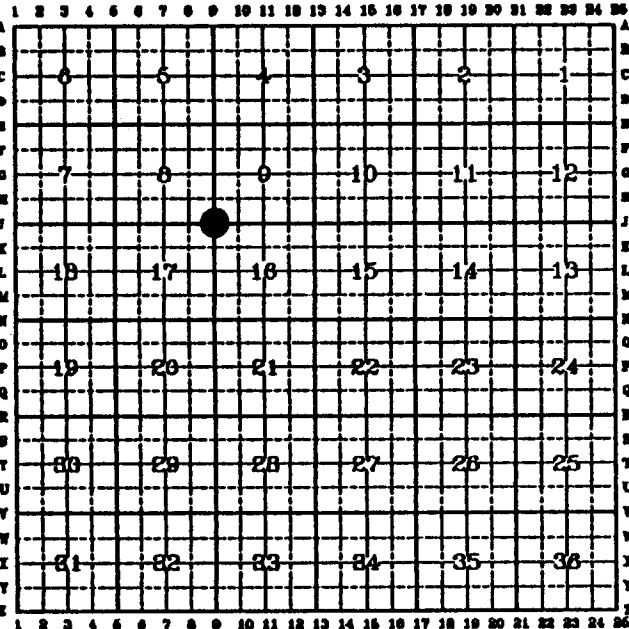
T.18N., R.67W.

Date of Field Work: 4 Dec 96 Office Reference: W0 9463 BK 994

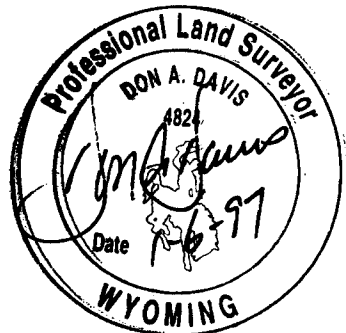
CROSS INDEX DIAGRAM

Firm/Agency, Address

This corner record was prepared by me or under my direction and supervision.
SEAL & SIGNATURE



Worthington, Lenhart & Carpenter, Inc.
200 Pronghorn Street
Casper, Wyoming 82601
Telephone Number: 307-266-2524



Corner Name: NW Section: 16 T. 18N R. 67W; 6th P.M. Cross-Index No.: J-9

SBRPEPLS/PLSW: March 1994

BOOK 1461

0665